



# Whinstone Weekly

Academic Year 2025/2026 - Summer term

Friday 5th June 2026

## Whinstone Wide - General school information

### Sports days

Our final Sports Days for Reception and Years 5 and 6 will take place next week. We have been fortunate with the weather so far this week - although our Pre-school children did bravely complete some activities in light rain!

All Sports Days will begin at 1:45pm. Once the events have finished, you are welcome to take your child home with you. However, if they have a sibling still in school, that sibling will not be permitted to leave early.

Access to the school field will be via the gate near the front entrance (opposite Soigne). This gate will open approximately five minutes before the start time to ensure the site remains secure.

In the event of adverse weather, a decision to cancel will be made by 12:15pm on the day. You will be notified via email and an update will be posted on our Facebook group. Please do not contact the school office before 12:15pm, as a final decision will not be made before this time. Weather conditions can change quickly, so we aim to wait as long as possible while still giving families sufficient notice.

If we are lucky enough to have warm, sunny weather, please ensure your child comes to school wearing sun cream (an all-day version is recommended) and a sun hat.

Reception	Monday 8 <sup>th</sup> June starting at 13:45.
Year 5 and Year 6	Tuesday 9 <sup>th</sup> June starting at 13:45.

### Colour Run

Whinstone Primary will once again be taking part in a Colour Run in support of Teesside Mind. This year's event will take place on Friday 26th June and marks our third year of hosting this fantastic fundraiser. Last year, we were commended for raising over £4,000 - an incredible achievement that we are very proud of!

Our Colour Run will involve all children from Reception through to Year 6 and, for many, it is a highlight of the school year. There is nothing quite as enjoyable as running around with friends while being showered in colourful powder!

Today, our Key Stage 2 children attended an assembly delivered by Teesside Mind, where they learned about the importance of looking after their mental health and wellbeing. Next week, Mrs Gibson and our Mental Health Ambassadors will revisit these key messages through further assemblies. They will help pupils understand what the Colour Run involves, reinforce the importance of mental wellbeing, and highlight the valuable work that Teesside Mind does to support individuals and families.

All children have received a sponsor form today, and we are hopeful that we can match - or even exceed - last year's total in support of this important cause. Please ensure that all sponsor money is returned by Friday 26th June, the day of the run. Further details about what children should wear and how the event will be organised will be shared closer to the date. This is always a much-loved event in the school calendar, and we are very much looking forward to it!



## Year 4 Swimming

The Year 4 swimming programme will begin next week. Sessions will take place every afternoon from Monday 8th June to Friday 19th June 2026.

Lessons are delivered as part of the Tees Active School Swimming Programme at Ingleby Barwick Swimming Pool. Full details have been shared with Year 4 parents and carers via Arbor. If you have not yet seen this information, please check your emails.

Please ensure your child brings their swimming kit to school every day. We are often asked similar questions about the programme; most are answered in the information sent home. For further clarity, here are some key reminders:

- Girls should wear a one-piece swimsuit
- Boys should wear swimming trunks or shorts (no long, baggy shorts or football shorts)
- Goggles may be worn, provided children can put them on independently
- Swimming hats are not compulsory; however, they are strongly recommended for children with longer hair to help keep hair dry and avoid disruption during lessons
- Long hair must be tied back at all times



## Whinstone Parents fundraising for MND

As you were made aware in March, our school - alongside many others across Stockton - took part in a non-uniform day and a community walk to raise both awareness and funds for Motor Neurone Disease (MND). This effort was in support of a much-loved and highly respected Head Teacher, Claire Park, who was recently diagnosed with the condition.

MND is a devastating illness that progresses rapidly, affecting a person's mobility, independence, and quality of life. Currently, there is no cure. The Motor Neurone Disease Association provides essential support to those living with MND and their families, funds vital research, and campaigns for improved care. Their work makes a meaningful difference, because with MND, every day truly matters.



Continuing this important cause, two parents from our school community—Mr Whitley and Mr Price (who is also a school Governor) - are taking on the incredible challenge of completing the Lakeland 100 this weekend. This demanding 100-mile run through the Lake District aims to raise further funds for the charity.

100 miles is no easy feat and Mr Price (photographer here) also did a 'short' practise event running the Leeds Marathon recently, also for MND!

As part of the ongoing support for the Stockton Schools' charity focus, if you would like to support this cause and recognise the efforts of these two parents, donations can be made via [this link](#). I am sure you all join me in wishing Mr Price and Mr Whitley the best of luck for tomorrow.

## Year 5 sculptures in the Stockton exhibition

Last year, some of our current Year 5 pupils took part in a Stockton-wide project, creating a range of impressive clay sculptures. These pieces are now being brought together with artwork from other schools across the borough to form a large-scale, two-day community art exhibition.

Everyone is invited to attend on Saturday 20th June and Sunday 21st June, when the heart of Stockton will be transformed by over 1,000 clay sculptures created by children from across the area. The exhibition will be displayed at The Oval Lawn within Stockton Waterfront Urban Park. This exhibition of work will form part of the very first community event held at the new park, celebrating creativity and collaboration across the borough.

Once again, we are very proud that Whinstone is being represented in yet another community event.



# Around Whinstone this week.



Well done to those who earned a Headteacher's certificate from Mrs Batty this week.



One of the Year 2 phonics groups did some fantastic writing.



KS2 had an assembly delivered by representatives from Teesside Mind.



Year 4 had a session with Mr Foggitt from Yarm School who looked at work on Microbits.

Whinstone hosted an OPAL event for other schools to come and see our excellent play provision. Schools from all over the North East attended.

Digital Leaders hosted an assembly to share with the children their important role in school.



We had the first few sports days!

# Whinstone Stars

At the weekend, Addie completed a 5km Muddy Run and raised over £300 for Cancer Research UK.

Fantastic, Addie - well done.



Noah and Arthur were both awarded medals for cycling. They attend a session each week and learn how to do skills on their bikes. The medals they received were not only for their fantastic effort but also great listening. Both achieved a 'Rider of the Week' award.

Well done, boys - keep it up!



Five of our pupils: George, Freddie, Penelope, Grayson, and Verity ran the Yarm Fun Run.

George came in 35th out of 470 entries completing the distance in just 20 minutes.

Fantastic efforts from all of you - well done!



## Would you rather...?



**Oracy - talk matters!**

This week's random question to discuss with your child.

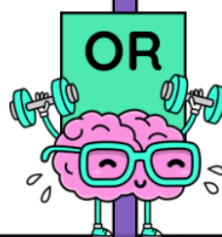
WOULD YOU RATHER

WEEK BEGINNING  
08/06/26

Be Wonderwoman?



Be Catwoman?



# Whinstone next week

## Reception sports day

On Monday, Reception are having their sports day. This starts at 1:45pm. The designated gate will open approximately 5 minutes before this.



## Year 4 swimming

Every afternoon, Year 4 children will be going swimming at IB Leisure pool in Ingleby. Please remember to send your child with their swimming kit each day.

## Phonics screening

Our Year 1 children will be taking their Phonics Screening Check. They have done brilliantly in the practise test so we know they will do well.

## Year 5 and Year 6 sports day

On Tuesday, Years 5 and 6 have their sports day. This starts at 1:45pm. Gates open approximately 5 minutes before this.



## Year 1 Forest School

On Wednesday, Year 1 children will have a Forest School session.

## School Drama Club dress rehearsal

On Thursday, in readiness for next week's performances, our Drama Club will be having a full dress rehearsal of the production, 'Charlie and the Chocolate Factory.'

## Toy Fair

On Friday, Friends of Whinstone are holding their toy fair. Please send in any donations of good quality toys you no longer want next week.

Remember to send in money if you would like your child to go to the toy fair and purchase something.

# Safeguarding and Family Support

## Eco-shop at Stockton Family Hub

Each Thursday, Stockton Family Hub host an Eco-shop. There are bargains on food, snacks and household items. You can have free refreshments too!

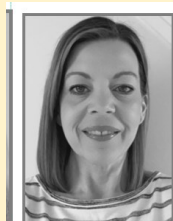
The shop is open from 09:30–12:00 each Thursday.



## Safeguarding :

The Designated Safeguarding Lead (DSL) for the school is **Mrs Batty**.

Our other safeguarding leads in school are:



Mrs Wilson-Dukes



Mr Carlton



Mrs Squires



Mr Ford



If you are worried about a child, please contact school or the Stockton Family Help Point using [this link](#).

During working hours call: 01642 130080 or Email: [familyhelppoint@stockton.gov.uk](mailto:familyhelppoint@stockton.gov.uk)

In an emergency, please contact the Police on **101** or **999**.

## Attendance

No change on our whole school attendance figure this week. Let's see if next week we can move it up. We all need to promote the long term benefits of developing good attendance habits whilst young.

Whole school attendance  
(year to date)

➔ **94.9%**

National average = 94.6%



Miss Owens, our PSA, is available to support and help with any issues you have regarding attendance or to support around other concerns you have affecting your family. Contact the school if you would like to speak with her.