



Whinstone Weekly

Academic Year 2024/2025 - Spring term

Friday 21st March 2025

Whinstone Wide - General school information

Play equipment :

With the summer months approaching, we know children love to use the fixed wooden play equipment on the KS1 playground. As stated on previous newsletters, we allow children to be on this both before and after school. However, I must remind you that **this equipment is not monitored or supervised by staff either before or after the school day**. If you choose to allow your child onto the equipment, **please**

ensure you supervise this - it is your responsibility to make sure your child is using the equipment in a safe and appropriate manner - this includes their behaviour towards others whilst on it. If you are unable to supervise your child whilst on the equipment, please do not allow them on it. Also, just to remind everyone, we do not allow children on the fixed equipment in the KS2 area by the shed and bike stores.



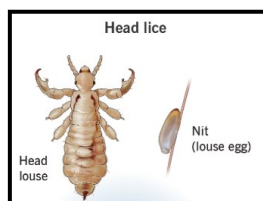
Parents' Evenings

This is a reminder that the parents' evenings for Reception to Y6 are on Tuesday 1st April (15:30-18:00) and Wednesday 2nd April (15:30-17:30). All appointments went live to book on Arbor on Monday and many have already booked their slot. If you want to book a time to speak with your child's class teacher, please log into your Arbor account, go to '*Guardian Consultations*' and select the day you require. Go to '*Meetings*' and click on the time slot you would like, then confirm your booking.



Head lice

We have had a few classes with an outbreak of headlice. Can we please ask everybody to check their child's hair over the weekend. If we all check and treat at the same time, it should eradicate the problem. Issues arise when some parents treat and others don't, then the cycle continues. Let's use this weekend as the opportunity to stop this becoming a bigger issue. You have been sent information on how to treat lice earlier in the week..



For more information, you can follow this link for advice on treatment provided by the NHS. [Link for advice here.](#)

Plea for our new rockery

After a suggestion by a parent regarding the area outside of pre-school and the main entrance, we are in the process of digging out the area to put stone down and also make a rockery with alpine plants. However, to achieve this we need some rocks! Today, one person kindly donated six large rocks - but do you, or anybody else you know, have any more? If so, please either bring in to school or let us know and we will collect them from you. It would be great to not need to have to buy any - hopefully someone out there has some they want rid of.



Updating information

Please can you update the school with any changes to your child's circumstances. This could be a change of address, change of contact number or if they have any newly diagnosed allergies or illnesses. It is important we hold the correct information in order that we can safeguard your children.

National Pet Month - Bring your pet to school assembly

April is National Pet Month. Our Mental Health Champions are organising a special assembly to celebrate this. You will have received a letter today about it.

If you are interested in bringing in a pet that is unique, **and small enough that it can be held**, you can enter your pet to be considered. **Two pets per class will be chosen by the Mental Health Champions.** If your pet is chosen, a parent **will be needed to bring it to the assembly on Friday 4th April, and take it home straight afterwards.** Please **do not put your pet forward if you cannot make this date.** Assemblies are in the morning.

Key dates

We are aware that parents need sufficient time to organise time off work for key events in school. We have previously shared with you the dates for the main events over the year but I do like to keep doing this especially for those who may have joined school since this was sent out. A list of the remaining key dates are below for you to see.

Whinstone Calendar 24-25 Parent version	
April	
Tuesday 1 st	Parents evening - until 6pm
Wednesday 2 nd	Parents evening - until 5:30pm
Monday 7 th - Wednesday 9 th	Y4 Robinwood residential
May	
Monday 5 th	Bank Holiday - school closed
Monday 12 th - Thursday 15 th	KS2 SATs
Wednesday 21 st	UNICEF Day for Cultural Diversity Day - whole school event
Monday 26 th - Friday 30 th	Half term week - school closed
June	
Monday 9 th - Friday 13 th	Y4 Multiplication check Phonics Screening check
Wednesday 11 th and Thursday 12 th	School production of 'Joseph' (evening event)
Monday 16 th - Friday 20 th	Y6 Carlton Residential
Monday 23 rd - Friday 27 th	Sports week - in school activities across all year groups
Monday 30 th	Y1/2 Sports day (afternoon)
Saturday 21 st	Whinstonbury (music festival on the playground)
July	
Tuesday 1 st	Y5/6 Sports day (afternoon)
Wednesday 2 nd	Pre-School Sports day
Thursday 3 rd	Y3/4 Sports day (afternoon)
Friday 4 th	Reception Sports day (afternoon)
Week commencing 7 th	Reports going out - whole school
Monday 7 th	Back-up afternoon for any 'rained off' sports days.
Tuesday 8 th	Back-up afternoon for any 'rained off' sports days.
Wednesday 9 th	Pre-school graduation (afternoon)
Monday 21 st	PD Day - school closed to children

Around Whinstone this week.

Science Week



What a wonderful week it was across school - a week that has hopefully helped to inspire future scientists! Our children got to discover all about how science helps us to change and adapt - with many investigations and experiments taking place in the classrooms.

With the help of Tees Valley Wildlife Trust, each class got to experience our newly renovated wildlife area and discover nature and the biodiversity all around us.

We would like to say a big thank you to all the parents and carers who have helped with the brilliant competition entries. The winners of the competition will receive a prize and certificate next week.





Our KS2 certificate winners this week. They are also in their Red Nose Day attire!



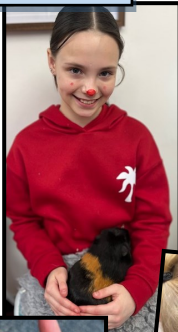
Our Reception children used junk modelling to create their own animal.



OPAL (Outdoor Play and Learning) time!



Animal time.



Whinstone Stars

Oliver played in a football tournament in Portugal! He plays for Middlesbrough Academy and competed against 32 teams including Aston Villa's academy, Arsenal and Leeds. The team did brilliantly and came 3rd. A fantastic achievement and one day, I'm sure we will see Oliver playing for the main Middlesbrough team and on the pitch at the Riverside Stadium. Well done, we are very proud of you!



Whinstone next week

Year 5 Ambassadors

Our Y5 Ambassadors, accompanied by Mrs Goldsmith and Mr Carlton, will be visiting Whitehouse Primary on Thursday morning.

Year 5 - Microbits

Year 5 will be working with people from Yarm School to learn about Microbits.

Year 4 Forest School

Year 4 will have their second Forest School sessions on Tuesday.

Teesside High's performance of Little Shop of Horrors

Our Y5 children who are taking part in Teesside High's production of Little Shop of Horrors, will be doing their performance on Wednesday evening at Teesside High.

AIM High Maths Event

Selected KS2 children (you will have been notified) will be attending the AIM High event on maths at The Links Primary. There are two days - Monday and Wednesday.

Attendance



Whole school attendance (year to date)

95.1%

National average = 94.6%

Safeguarding and Family Support



Mindful Together

Mindful Together is a group that supports your children's mental and emotional health with a range of tools and techniques to help calm their body and mind. It can help build their confidence and improve their sleep.

There are new groups starting on

Wednesday 26th March at Thornaby Family Hub:

For ages 5-7 years old = 3:30-4:15pm

For ages 8-11 years old = 4:30-5:15pm

If you would like to find out more about Mindful

Together or book a place for your child, please contact your local



Understanding Behaviour

The Understanding Children's Behaviour workshops is a 2 hour session looking at the effects of feelings on behaviour and useful strategies to support managing your child's behaviour.

The next available sessions are:

Tuesday 25th March 12:45-2:45pm at Billingham Family Hub (5-10 year olds)

Thursday 10th April 1-3pm at Stockton Family Hub (2-5 year olds)

Tuesday 29th April 1-3pm at Redhill Family Hub (2-5 year olds)

Please speak with a member of the team at your local Family Hub or call them on 01642 528525 to book your place.



Safeguarding :

The Designated Safeguarding Lead (DSL) for the school is **Mrs Hardy**.

Our other safeguarding leads in school are:



Mrs Batty



Mrs Wilson- Dukes



Mr Carlton



Mrs Squires



Mr Ford

If you are worried about a child, please call the Hartlepool and Stockton-on-Tees Children's Hub on **01429 284284 / 01642 130080** or out of office hours call **01642 524552**

In an emergency, please contact the Police on **101** or **999**.